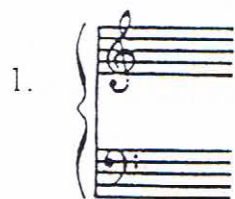


#9

Level A Practice Theory Exam Name _____
1998-99 IMTA District Piano Auditions Teacher _____
 Exam Committee: Cyndie Caruth, Pat Luiken, Lois Nassen

Questions 1-12. Circle the correct answer.

Questions 13-24. Write the number of the musical word in the blank beside the correct answer.



1. a. time signature
b. measure
c. grand staff
2. B to C a. whole step
b. half step
3. G to G# a. whole step
b. half step
4. a. gradually softer
b. gradually louder

5. *p* a. loud
b. soft
c. slow

6. **3/4** a. four counts each measure
b. three counts each measure

7. *b* a. sharp
b. natural
c. flat

8. a. 2nd
b. 3rd
c. 4th
d. 5th

9. a. 2nd
b. 3rd
c. 4th
d. 5th

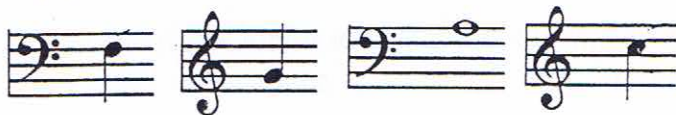
10. a. 2nd
b. 3rd
c. 4th
d. 5th

11. a. half rest
b. quarter rest
c. whole rest

12. a. half rest
b. quarter rest
c. whole rest

13. crescendo _____ moderately loud
14. 8 va _____ the end
15. staccato _____ gradually softer
16. da capo _____ hold, pause
17. mf _____ detached
18. diminuendo _____ gradually louder
19. ritard _____ moderately soft
20. legato _____ octave higher or lower
21. a tempo _____ from the beginning
22. fermata _____ gradually slower
23. fine _____ return to original tempo
24. mp _____ smooth

Questions 25-28. Write the note name below the staff.



25. _____ 26. _____ 27. _____ 28. _____

Questions 29-40. Circle the correct answer.

29. major scale pattern a. WWHWWHW
b. WHWWWHW
c. WWHWWWH

30. G major scale a. GABCDEF#G
b. GABCDEFG
c. GABCDEFbG

31. a. slur
b. tie
c. repeat

32. a. double bar line
b. measure
c. repeat sign

33. a. slur
b. tie
c. repeat

34. F major scale a. FGABbCDEF
b. FGABbCDEbF
c. FGABCDEbF

