

Score \_\_\_\_\_

LEVEL E FINAL MUSIC THEORY EXAM  
1988-89 IMTA DISTRICT PIANO AUDITIONS

Name \_\_\_\_\_

Teacher \_\_\_\_\_

#27

Exam Committee: Helen Canine (chairperson), Jan Carlson,  
Grace Eggers, Marian Luke, Joyce Templeman, Jean Yungclas

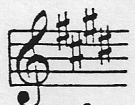
Questions 1-6. Name these key signatures.



1. Key of \_\_\_\_\_ major  
2. Key of \_\_\_\_\_ minor



3. Key of \_\_\_\_\_ major  
4. Key of \_\_\_\_\_ minor



5. Key of \_\_\_\_\_ major



6. Key of \_\_\_\_\_ minor

7. Which pair are RELATIVE M/m scales?

- a. B and G#m  
b. B and Bm  
c. B and D

8. Which pair are PARALLEL M/m scales?

- a. F# and D#m  
b. F# and F#m  
c. F# and Dm

9. Which is tonic scale degree in C# minor?

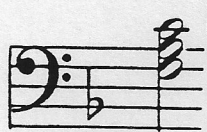
- a. D  
b. C#  
c. F#

10. Which is subdominant scale degree in Ab major?

- a. Db  
b. Eb  
c. C

11. Which is dominant scale degree in C# major?

- a. G#  
b. F#  
c. A#



12. This chord is the tonic in the key of: F G C  
13. This chord is subdominant in the key of: G F C  
14. This chord is the dominant in the key of: C Bb F

15.        6        6        9        12  
          4        8        8        8

- a. Simple time signatures  
b. Compound time signatures

16.        2        2        3        4        4  
          2        4        4        4        8

- a. Simple time signatures  
b. Compound time signatures

Questions 17-22. Fill in missing note to complete these triads.

17. G aug.        - G    B    \_\_\_\_\_

18. D minor        - D    \_\_\_\_\_ A

19. C dim.        - C    \_\_\_\_\_ Gb

20. C# major        - C#    \_\_\_\_\_ G#

21. F# dim.        - F#    A    \_\_\_\_\_

22. E aug.        - E    G#    \_\_\_\_\_

Questions 23-29. Match number of term to definition.

23. tenuto        \_\_\_\_\_ quick, lively

24. vivace        \_\_\_\_\_ sweetly, softly

25. largo        \_\_\_\_\_ marked, stressed

26. molto        \_\_\_\_\_ singable, singing

27. dolce        \_\_\_\_\_ very

28. cantabile        \_\_\_\_\_ very slow tempo

29. marcato        \_\_\_\_\_ hold for full value

Questions 30-35. Name the intervals.


(m2 M2 m3 M3 P4 P5 m6 M6 m7 M7)

30. C# up to B# is a \_\_\_\_\_.

31. Bb up to Eb is a \_\_\_\_\_.



32. \_\_\_\_\_ 33. \_\_\_\_\_ 34. \_\_\_\_\_ 35. \_\_\_\_\_

36. This sign  is a . . . a. 32nd rest  
b. 16th rest  
c. 64th rest

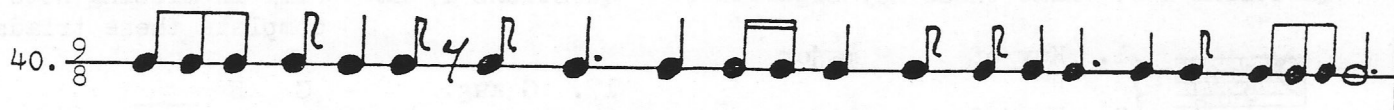
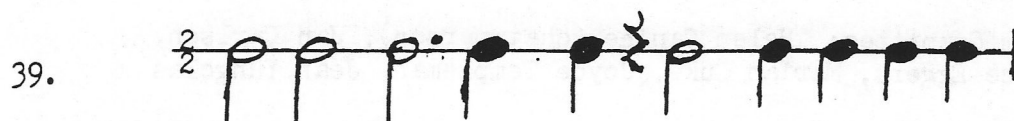
Questions 37-38. This example when transposed would be:

37. UP a P5 - a. C G F  
b. D G F  
c. D A G



38. DOWN a M2 - a. F C Bb  
b. E B A  
c. F C B

Questions 39-40. Add the missing bar lines.



### EAR TRAINING

41. Identify the quality of this scale.

Major

Minor

Chromatic

42. Identify the mode of this music.

Major

Minor

Questions 43-44. Identify the intervals you hear. (m2 M2 m3 M3 P4 P5 m6 M6 m7 M7)

43. \_\_\_\_\_

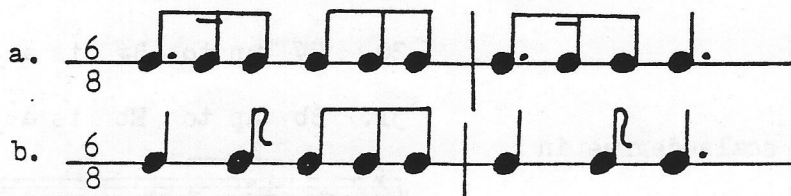
44. \_\_\_\_\_

Questions 45-46. Identify the quality of the triads you hear.  
(Major, minor, aug., dim.)

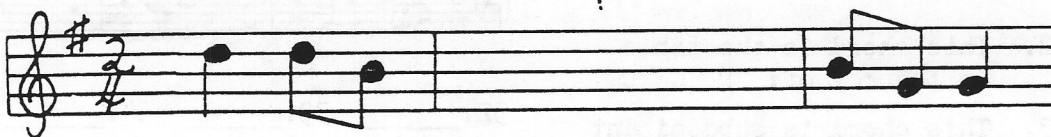
45. \_\_\_\_\_

46. \_\_\_\_\_

47. Identify the rhythmic pattern you hear.



48. Write the notes you hear played in the middle measure.



49. Are the two phrases you hear in this music exactly alike?

yes

no

50. Which term best describes this music?

Marcato

Pesante

Cantabile

Vivace