

C3

Score \_\_\_\_\_

## Level C Practice Theory Test

Name \_\_\_\_\_

## 2019-2020 IMTA District Piano Auditions

Teacher \_\_\_\_\_

Theory Committee: Deborah Ausborn, Samuel Kwok, Sherri Lauritson, Doris Swanson, and Jeanette Hinkeldey (chair)

## Questions 1.—8.:

Write the correct answer in the blank.

1. Write the order of SHARPS in a key signature.

\_\_\_\_\_

2. Write the order of FLATS in a key signature.

\_\_\_\_\_

Name the following notes:



3. \_\_\_\_\_ 4. \_\_\_\_\_ 5. \_\_\_\_\_ 6. \_\_\_\_\_ 7. \_\_\_\_\_ 8. \_\_\_\_\_

## Questions 9.—13. Circle the correct answer.

9. A Major scale
1. A B C D E F# G# A
  2. A B C# D E F# G# A
  3. A B C D E F G# A

10. D harmonic minor scale
1. D E F G A B C D
  2. D E F G A B<sup>b</sup> C# D
  3. D E F# G A B C# D

11. E<sup>b</sup> Major scale
1. E<sup>b</sup> F G A<sup>b</sup> B<sup>b</sup> C D E<sup>b</sup>
  2. E<sup>b</sup> F G<sup>b</sup> A<sup>b</sup> B<sup>b</sup> C D E<sup>b</sup>
  3. E<sup>b</sup> F G A B<sup>b</sup> C D E<sup>b</sup>

12. E harmonic minor scale
1. E F# G A B C# D# E
  2. E F# G# A B C# D# E
  3. E F# G A B C D# E

13. Which scale uses the following pattern?  
W H W W H 1 ½ H

1. Major scale
2. Harmonic minor scale
3. Chromatic scale

## Questions 14.-19. Add the correct letter to the blanks to complete the following major or minor triads.

MAJOR TRIADS 14. B<sup>b</sup> \_\_\_\_\_ F

15. \_\_\_\_\_ F# A

16. A C# \_\_\_\_\_

MINOR TRIADS 17. D \_\_\_\_\_ A

18. B<sup>b</sup> \_\_\_\_\_ F

19. A \_\_\_\_\_ E

## 20. Circle the correct triad:



1. A major
2. F major

## 3. A minor

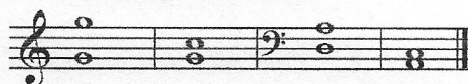
## Questions 21. - 33. Write the number of the matching term in each blank.

21. *pianissimo* \_\_\_\_\_ very loud
22. *andante* \_\_\_\_\_ moderate tempo
23. *ff* \_\_\_\_\_ tempo between andante and allegro
24. *accent* \_\_\_\_\_ octave higher or lower
25. *allegro* \_\_\_\_\_ repeat
26. *moderato* \_\_\_\_\_ gradually softer
27. *ritard* \_\_\_\_\_ gradually louder
28. *sva* \_\_\_\_\_ one note or chord is played louder
29. *allegretto* \_\_\_\_\_ hold, pause
30. *fermata* \_\_\_\_\_ very soft
31. \_\_\_\_\_ walking tempo
32. *crescendo* \_\_\_\_\_ fast tempo
33. *diminuendo* \_\_\_\_\_ gradually slower

## Questions 34.-35. Circle the correct answer to complete each measure.

34. 1. = 2. 3. 7

35. 1. 2. 3.

Questions 36.-39. Write the name of the intervals.  
(m3 M3 P4 P5 P8)

36. \_\_\_\_\_ 37. \_\_\_\_\_ 38. \_\_\_\_\_ 39. \_\_\_\_\_

40. Circle the correct example that is up a Major 2<sup>nd</sup> from the example.

1. G B D F
2. G B D F#
3. G<sup>b</sup> B<sup>b</sup> D<sup>b</sup> F

EAR-TRAINING

Listen to each example twice. Upon completion, you may ask to hear any example a third time.

Questions 41. – 50. Circle the correct answer.

41. Is the example played with a staccato or legato touch?

staccato                      legato
42. Is this music in a major or a minor key?

major key                      minor key
43. Listen to two scales. Which scale is harmonic minor?

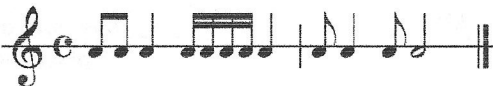
1<sup>st</sup> scale                      2<sup>nd</sup> scale
44. What interval do you hear?

2<sup>nd</sup>    3<sup>rd</sup>    4<sup>th</sup>    5<sup>th</sup>    6<sup>th</sup>    7<sup>th</sup>    octave
45. What interval do you hear?

2<sup>nd</sup>    3<sup>rd</sup>    4<sup>th</sup>    5<sup>th</sup>    6<sup>th</sup>    7<sup>th</sup>    octave
46. Listen to the quality of the triad F \_\_\_\_ C. Identify the middle note:

A                      Ab                      G

47. Which rhythm do you hear?



48. Is this triad major or minor?

Major                      Minor
49. What is the time signature of the listening example?

$\frac{3}{4}$                        $\frac{4}{4}$

50. Which phrase do you hear?

